

A M E R I C A N
R I V E R B A S I N



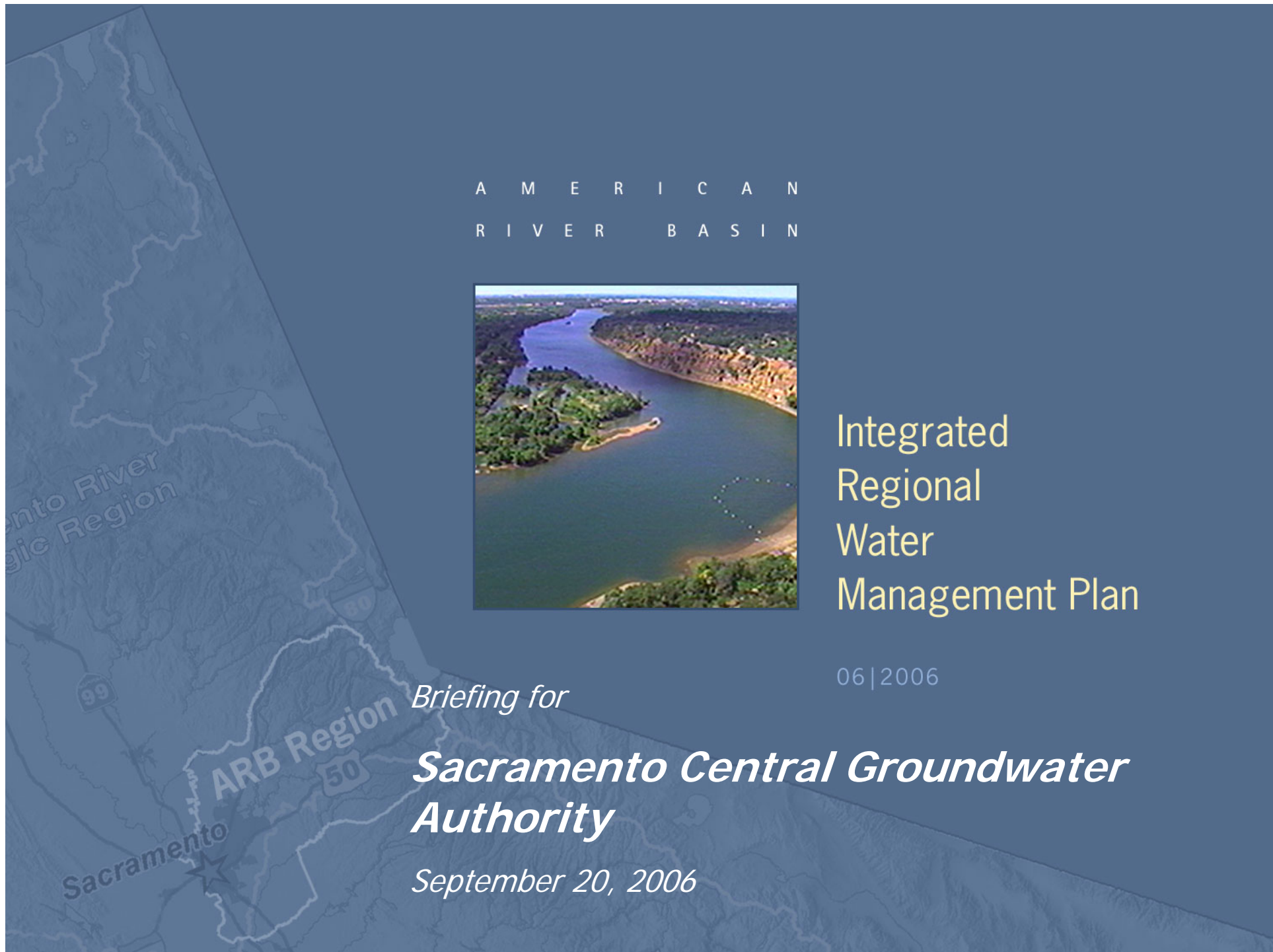
Integrated
Regional
Water
Management Plan

06 | 2006

Briefing for

***Sacramento Central Groundwater
Authority***

September 20, 2006



Today's Briefing

Regional Cooperation and Planning in the American River Basin

- Water Forum Agreement
- What is an IRWMP?
- The American River Basin Integrated Regional Water Management Plan (ARB IRWMP)
- What's next?

Water Forum Agreement

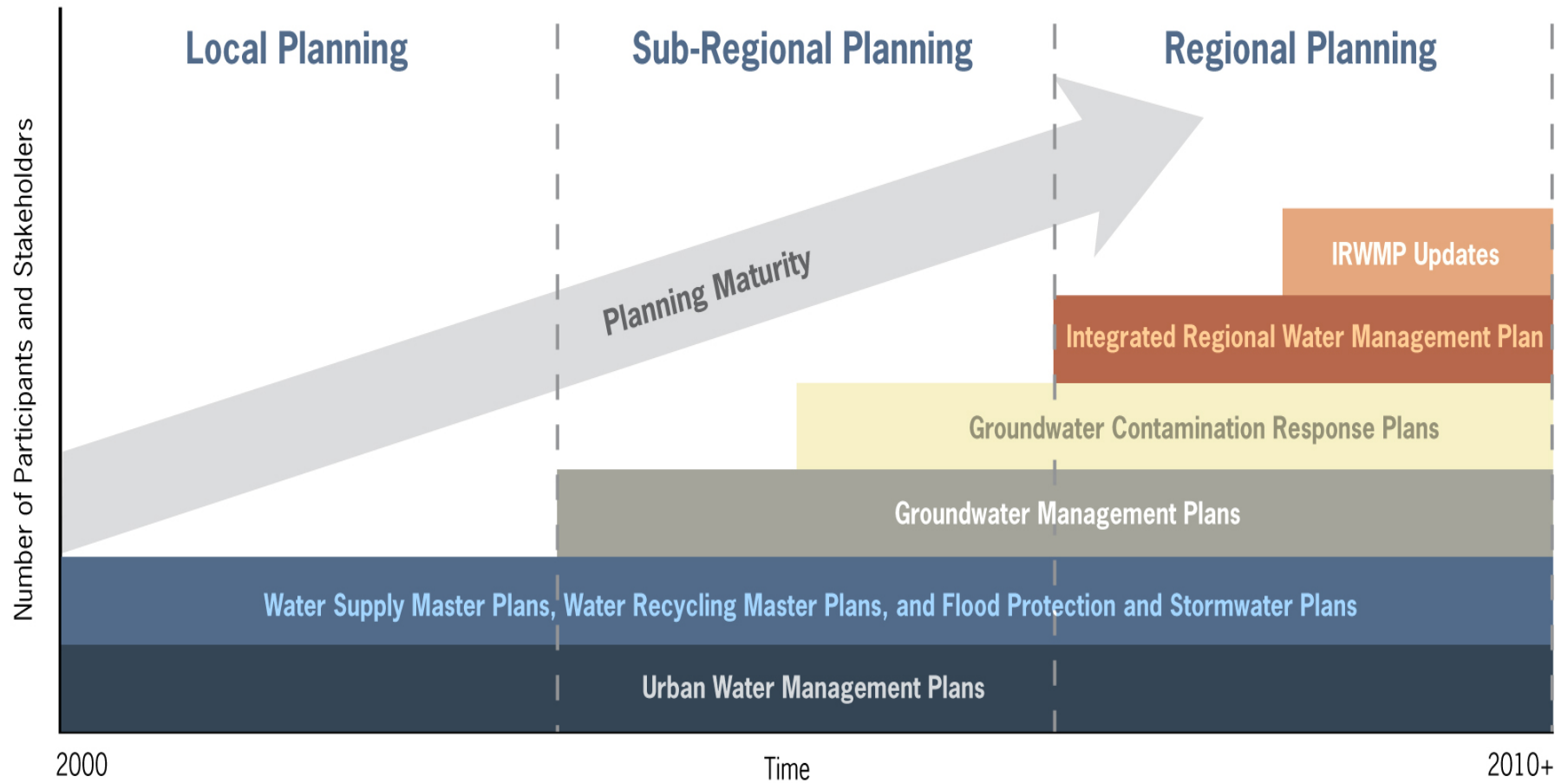
- Reliable Water Supplies for the Region through Conjunctive Use Projects and Programs
- Benefits to the Lower American River




What is an IRWMP?

- Comprehensive planning document that plans for, and ensures, implementation of priority water management projects and programs
- Integrates multiple water management strategies to solve priority challenges
- Meets standards set forth by DWR/State Water Resources Control Board
- Logical “next step” in regional planning & coordination

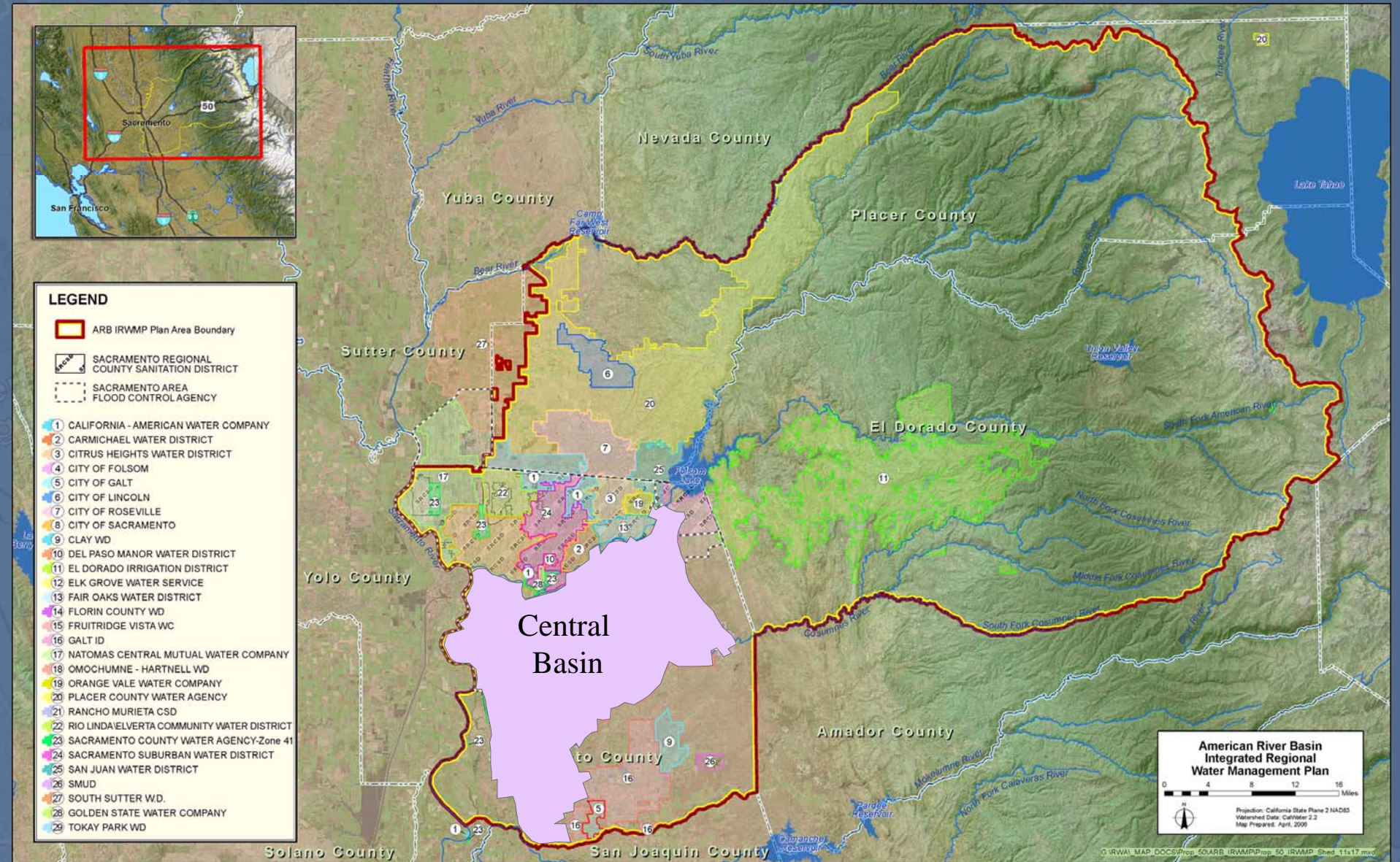
State Agencies Looking for Regional Planning and Cooperation



Importance of an IRWMP?

- Provides for & encourages regional opportunities for water resources planning & project development
- Mechanisms for stakeholder involvement
- Basis for State & federal funding requests (e.g. Prop 50 and Prop 84) 
- “Living document” to be updated in future

American River Basin (ARB) Region



The ARB IRWMP

- Effort led by RWA/SCWA/FRWA
- Linkage of efforts north and south of American River
- CSCGMP is an integral part of the IRWMP
- Adopted in May 2006
- “Living” document that will be updated in the future



Water Resources Challenges in the ARB Region

- Availability of long-term reliable water supplies for municipal, ag, and private uses
- Protecting GW and SW quality
- Ecosystem restoration



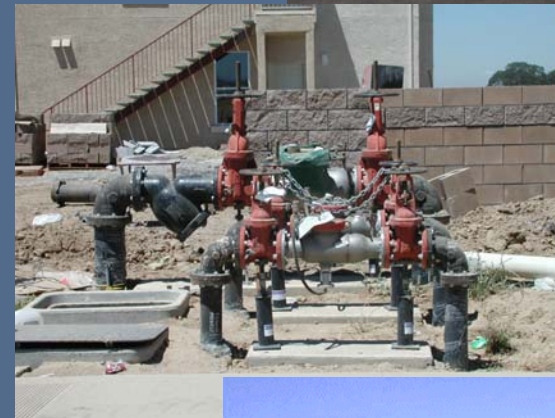
Water Resources Challenges in the ARB Region

- Water conservation
- Increasing recycled water supplies
- Implementation of stormwater & flood control measures & enhanced floodplain management



What's Next?

- Create a transparent process for all interested Stakeholders
- Incorporation of:
 - Additional projects & programs
 - Additional stakeholders
 - Local plans, as completed
 - etc.
- Continue coordination with adjacent areas & IRWMPs
 - CABY, NCWA, Yolo County, San Joaquin, etc.



Importance of Stakeholder Involvement

- Capture projects and programs that reflect Region's solution to water resources challenges
- Create ownership in ARB IRWMP by all interested stakeholders
- Produce document for use by stakeholder(s) for purpose of grant eligibility through current (e.g., Prop 50) and future (e.g., Prop 84) programs

Outreach Presentations

- 8/2 American Basin Council of Watersheds
- 8/24 Environmental Caucus
- 9/20 SCGA Board Meeting
- 9/21 WFSE Plenary Session

Central Sacramento County IRWMP Involvement

- SCWA will coordinate Central Sacramento County involvement in ARB IRWMP process
- Involvement of municipal, ag, ag/res, environmental/community, business, purveyors is necessary
- Therefore, SCGA would be natural venue for stakeholder involvement.
- Will present at next SCGA meeting with more information on Central Sac involvement.

Additional Information

- ARB IRWMP available on-line at:
 - www.rwah2o.org/rwa/programs/irwmp/
- Contacts:
 - Darrell Eck (SCWA): eckd@saccounty.net
 - Rob Swartz (RWA): rswartz@rwah2o.org